

2018



GENETICS
MADE IN GERMANY

КАТАЛОГ БЫКОВ



GEA

WestfaliaКазakhstan



Mercury

619076

DEU 000666188940



Born: 11/28/2012

aAa 243561 | Kappa Caseine -- | Beta Caseine --/-- | pp | CVF BLF BYF CDF

TPI 2573 | Milk lbs +808 | Fat +0,11 % | Protein +0,04 % | Daughters: 1104
 NM\$ 717 | Herds: 193
 CM\$ 746 | Fat +62 lbs | Protein +35 lbs | Reliability: 89 %

PL Productive life +5,5 85 % Rel.
 DPR Daughter pregnancy rate +2,0 87 % Rel.
 SCS Somatic cell score 2,62 90 % Rel.
 SCE Sire calving ease 5,6 % Diff. 71 % Rel.
 DCE Daughter calving ease 4,5 % Diff. 65 % Rel.
 SSB Sire stillbirth 6,6 % 53 % Rel.
 DSB Daughter stillbirth 4,3 % 69 % Rel.

♂ **Mogul** (♂ Dorcy)

- ♀ CO-OP Bosside Yvette EX 90 (♂ **Domain**)
HL 2 11303 4.22 477 3.26 369
- ♀ CO-OP Bosside Yelonda VG 86 (♂ **Mascol**)
HL 2 12320 4.17 514 3.29 405
- ♀ Coyne-Farms Yelena VG 85 (♂ **Bret II**)



MERCURY

Proofs: 04/2018

		-1	0	+1	+2
PTAT	Type				+1,69
UDC	Udder Composite				+2,95
FLC	Feet & Legs Composite				+2,80
BSC	Body Composite				-1,72
Stature	Short				-1,06 Tall
Strength	Frail				-0,94 Strong
Body depth	Shallow				-0,53 Deep
Dairy form	Tight Ribbed				+1,42 Open Ribbed
Rump angle	High Pins				-0,33 Sloped
Thurl width	Narrow				-0,50 Wide
Rear leg (side view)	Posty				-0,77 Sickled
Rear leg (rear view)	Hock-in				+2,51 Straight
Foot angle	Low Angle				+0,70 Steep Angle
Feet & Legs Score	Low				+2,50 High
Fore udder attachment	Loose				+3,10 Strong
Rear udder height	Low				+3,60 High
Rear udder width	Narrow				+3,24 Wide
Udder cleft	Weak				+0,29 Strong
Udder depth	Deep				+1,93 Shallow
Front teat placement	Wide				+1,24 Close
Rear teat placement	Wide				+1,00 Close
Teat length	Short				-1,52 Long

Morgan

804322

DEU 000121014006



Born: 12/18/2012

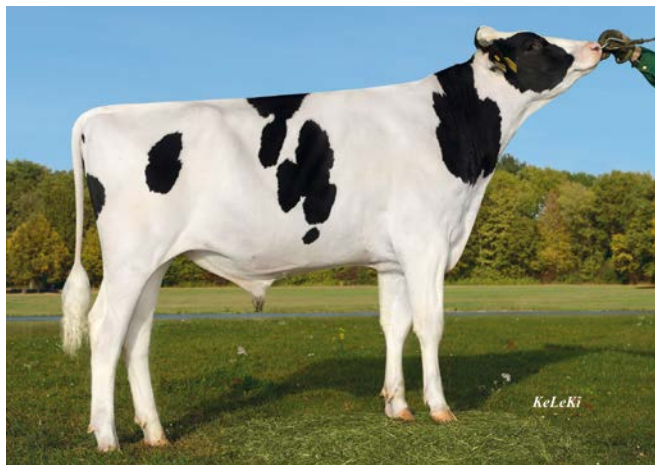
aAa 243651 | Kappa Caseine -- | Beta Caseine --/-- | pp | CVF BLF BYF CDF

TPI 2490 | Milk lbs +1390 | Fat +0,16 % | Protein +0,03 % | Daughters: 173
 NM\$ 735 | Herds: 42
 CM\$ 758 | Fat +97 lbs | Protein +52 lbs | Reliability: 78 %

PL Productive life +2,9 59 % Rel.
 DPR Daughter pregnancy rate -1,2 61 % Rel.
 SCS Somatic cell score 2,80 73 % Rel.
 SCE Sire calving ease 5,9 % Diff. 63 % Rel.
 DCE Daughter calving ease 4,2 % Diff. 56 % Rel.
 SSB Sire stillbirth 6,9 % 47 % Rel.
 DSB Daughter stillbirth 5,5 % 61 % Rel.

♂ **Mogul** (♂ Dorcy)

- ♀ KAX Debita VG 89 (♂ **Man-O-Man**)
HL 3 13938 4.53 632 3.64 507
- ♀ Desiree VG 89 (♂ **Goldwyn**)
HL 2 14561 4.06 591 3.21 467
- ♀ LD Desire EX 90 (♂ **Dundee**)



MORGAN

Proofs: 04/2018

		-1	0	+1	+2
PTAT	Type				+0,80
UDC	Udder Composite				+1,41
FLC	Feet & Legs Composite				+1,25
BSC	Body Composite				-1,65
Stature	Short				+0,18 Tall
Strength	Frail				-1,09 Strong
Body depth	Shallow				+0,49 Deep
Dairy form	Tight Ribbed				+1,64 Open Ribbed
Rump angle	High Pins				+0,32 Sloped
Thurl width	Narrow				-1,05 Wide
Rear leg (side view)	Posty				-2,46 Sickled
Rear leg (rear view)	Hock-in				+0,95 Straight
Foot angle	Low Angle				+1,64 Steep Angle
Feet & Legs Score	Low				+1,17 High
Fore udder attachment	Loose				+0,79 Strong
Rear udder height	Low				+3,01 High
Rear udder width	Narrow				+2,80 Wide
Udder cleft	Weak				-0,68 Strong
Udder depth	Deep				-0,38 Shallow
Front teat placement	Wide				+0,51 Close
Rear teat placement	Wide				+1,26 Close
Teat length	Short				-0,21 Long



German Genetics International GmbH

Caseine values with * are imputed values

Basement

Born: 6/22/2014

aAa 423651 | Kappa Caseine BB | Beta Caseine A2/A2 | pp | CVF BLF BYF CDF



681129
184HO09026
DEU 000538397041



TPI 2503 | Milk lbs +1245 | Fat +0,03 % | Protein +0,08 % | Daughters: - | Herds: - | Reliability: 79 %

PL Productive life +5,2 75 % Rel.
DPR Daughter pregnancy rate -0,3 74 % Rel.
SCS Somatic cell score 2,66 76 % Rel.
SCE Sire calving ease 5,8 % Diff. 75 % Rel.
DCE Daughter calving ease 3,7 % Diff. 59 % Rel.
SSB Sire stillbirth 7,8 % 66 % Rel.
DSB Daughter stillbirth 5,7 % 58 % Rel.

♂ **Balisto** (♂ Bookem)

♀ Melinda VG 86 (♂ **Snowman**)
HL 2 18202 2.67 486 3.21 584

♀ Melli VG 88 (♂ **Super**)
HL 4 14001 3.59 502 3.39 475

♀ Melody EX 90 (♂ **Shottle**)



BASEMENT

Proofs: 04/2018

BASEMENT 681129		-1	0	+1	+2
PTAT	Type				+1,48
UDC	Udder Composite				+1,52
FLC	Feet & Legs Composite				+1,81
BSC	Body Composite				+0,40
Stature	Short				+1,18 Tall
Strength	Frail				+0,60 Strong
Body depth	Shallow				+0,64 Deep
Dairy form	Tight Ribbed				+0,83 Open Ribbed
Rump angle	High Pins				+0,62 Sloped
Thurl width	Narrow				+0,19 Wide
Rear leg (side view)	Posty				-1,17 Sickled
Rear leg (rear view)	Hock-in				+2,07 Straight
Foot angle	Low Angle				+2,71 Steep Angle
Feet & Legs Score	Low				+1,72 High
Fore udder attachment	Loose				+2,50 Strong
Rear udder height	Low				+2,20 High
Rear udder width	Narrow				+2,02 Wide
Udder cleft	Weak				-0,74 Strong
Udder depth	Deep				+1,80 Shallow
Front teat placement	Wide				+0,28 Close
Rear teat placement	Wide				-0,49 Close
Teat length	Short				+0,07 Long

Cover

Born: 3/22/2015

THURLER RUW COVER

aAa 234165 | Kappa Caseine AB | Beta Caseine A2/A2 | pp | CVF BLF BYF CDF



682090
184HO09053
DEU 000770188609



TPI 2573 | Milk lbs +1281 | Fat +0,16 % | Protein +0,05 % | Daughters: - | Herds: - | Reliability: 79 %

PL Productive life +4,3 74 % Rel.
DPR Daughter pregnancy rate -0,4 75 % Rel.
SCS Somatic cell score 2,75 77 % Rel.
SCE Sire calving ease 5,5 % Diff. 80 % Rel.
DCE Daughter calving ease 4,3 % Diff. 60 % Rel.
SSB Sire stillbirth 6,3 % 70 % Rel.
DSB Daughter stillbirth 4,7 % 59 % Rel.

♂ **Commander** (♂ Mogul)

♀ Aija Supersire Makea VG 86 (♂ **Supersire**)
HL 1 12530 4.22 529 3.42 429

♀ Aija Man-O-Man Naomi VG 85 (♂ **Man-O-Man**)
HL 2 13799 4.04 557 3.36 463

♀ Aija Shottle Jenny VG 85 (♂ **Shottle**)



COVER

Proofs: 04/2018

COVER 682090		-1	0	+1	+2
PTAT	Type				+1,54
UDC	Udder Composite				+1,97
FLC	Feet & Legs Composite				+0,99
BSC	Body Composite				-0,70
Stature	Short				+0,86 Tall
Strength	Frail				-0,42 Strong
Body depth	Shallow				-0,20 Deep
Dairy form	Tight Ribbed				+1,44 Open Ribbed
Rump angle	High Pins				+0,86 Sloped
Thurl width	Narrow				+0,56 Wide
Rear leg (side view)	Posty				-0,04 Sickled
Rear leg (rear view)	Hock-in				+0,92 Straight
Foot angle	Low Angle				+0,65 Steep Angle
Feet & Legs Score	Low				+1,16 High
Fore udder attachment	Loose				+1,96 Strong
Rear udder height	Low				+2,89 High
Rear udder width	Narrow				+2,66 Wide
Udder cleft	Weak				+0,79 Strong
Udder depth	Deep				+1,72 Shallow
Front teat placement	Wide				+0,56 Close
Rear teat placement	Wide				+0,38 Close
Teat length	Short				+0,72 Long



German Genetics International GmbH

Caseine values with * are imputed values

3

GENETICS MADE IN GERMANY

For the correctness of the above-mentioned results GGI does not assume any liability.

Declic

Born: 1/21/2016

RZH DECLIC

aAa 324156 | Kappa Caseine AA | Beta Caseine A2/A2* | pp | CVF BLF BYF CDF



619148
234HO09041
DEU 000666869554



TPI 2451 | Milk lbs +1488 | Fat -0,06 % | Protein ±0,00 % | Daughters: - | Herds: - | Reliability: 79 %

PL Productive life +5,7 73 % Rel.
DPR Daughter pregnancy rate +2,0 72 % Rel.
SCS Somatic cell score 2,54 77 % Rel.
SCE Sire calving ease 6,2 % Diff. 62 % Rel.
DCE Daughter calving ease 5,0 % Diff. 58 % Rel.
SSB Sire stillbirth 8,2 % 58 % Rel.
DSB Daughter stillbirth 6,5 % 57 % Rel.

♂ **Dozer** (♂ Shotglass)

♀ Progenesis Enforcer Pink GP 84 (♂ **Enforcer**)

HL1 15273 3.01 459 3.25 496

♀ Russelway Cameron Pinky GP 83 (♂ **Cameron**)

HL1 11726 3.70 434 3.18 373

♀ Synergy Planet Polka GP 84 (♂ **Planet**)



DECLIC

Proofs: 04/2018

DECLIC 619148		-1	0	+1	+2
PTAT	Type				+1,43
UDC	Udder Composite				+1,57
FLC	Feet & Legs Composite				+0,90
BSC	Body Composite				+0,76
Stature	Short				+1,11 Tall
Strength	Frail				+0,89 Strong
Body depth	Shallow				+0,56 Deep
Dairy form	Tight Ribbed				+0,75 Open Ribbed
Rump angle	High Pins				+0,39 Sloped
Thurl width	Narrow				+1,00 Wide
Rear leg (side view)	Posty				-0,63 Sickled
Rear leg (rear view)	Hock-in				+1,30 Straight
Foot angle	Low Angle				+1,13 Steep Angle
Feet & Legs Score	Low				+0,94 High
Fore udder attachment	Loose				+1,65 Strong
Rear udder height	Low				+2,42 High
Rear udder width	Narrow				+2,23 Wide
Udder cleft	Weak				+0,73 Strong
Udder depth	Deep				+1,32 Shallow
Front teat placement	Wide				+1,27 Close
Rear teat placement	Wide				+1,18 Close
Teat length	Short				-1,13 Long

Jungle

Born: 3/8/2016

aAa 243165 | Kappa Caseine -- | Beta Caseine A1/A2 | pp | CVF BLF BYF CDF



571924
226HO09044
DEU 001405153925



TPI 2701 | Milk lbs +2355 | Fat -0,03 % | Protein ±0,00 % | Daughters: - | Herds: - | Reliability: 79 %

PL Productive life +5,9 74 % Rel.
DPR Daughter pregnancy rate +1,9 74 % Rel.
SCS Somatic cell score 2,85 77 % Rel.
SCE Sire calving ease 6,9 % Diff. 61 % Rel.
DCE Daughter calving ease 4,0 % Diff. 59 % Rel.
SSB Sire stillbirth 6,5 % 58 % Rel.
DSB Daughter stillbirth 3,7 % 57 % Rel.

♂ **Josuper** (♂ Supersire)

♀ De-su 3262 VG 85 (♂ **Galaxy**)

HL1 11464 4.72 541 3.46 397

♀ De-Su 1563 VG 85 (♂ **Bookem**)

HL1 13662 2.69 368 3.24 442

♀ M-O-M 2150 VG 87 (♂ **Man-O-Man**)



JUNGLE

Proofs: 04/2018

JUNGLE 571924		-1	0	+1	+2
PTAT	Type				+1,82
UDC	Udder Composite				+1,64
FLC	Feet & Legs Composite				+0,53
BSC	Body Composite				+1,08
Stature	Short				+1,76 Tall
Strength	Frail				+1,07 Strong
Body depth	Shallow				+0,50 Deep
Dairy form	Tight Ribbed				+0,60 Open Ribbed
Rump angle	High Pins				-0,05 Sloped
Thurl width	Narrow				+0,86 Wide
Rear leg (side view)	Posty				-0,02 Sickled
Rear leg (rear view)	Hock-in				+0,67 Straight
Foot angle	Low Angle				+0,99 Steep Angle
Feet & Legs Score	Low				+0,84 High
Fore udder attachment	Loose				+1,90 Strong
Rear udder height	Low				+2,63 High
Rear udder width	Narrow				+2,42 Wide
Udder cleft	Weak				+1,13 Strong
Udder depth	Deep				+1,30 Shallow
Front teat placement	Wide				+0,95 Close
Rear teat placement	Wide				+0,85 Close
Teat length	Short				+0,17 Long



German Genetics International GmbH

Caseine values with * are imputed values

4

GENETICS MADE IN GERMANY

For the correctness of the above-mentioned results GGI does not assume any liability.

Bretagne

Born: 2/17/2015

BRETAGNE ET

aAa 243165 | Kappa Caseine AB | Beta Caseine A1/A1 | pp | CVF BLF BYF CDF



917590
184HO09033
DEU 000538599944



TPI 2430 | Milk lbs +710 | Fat +0,09 % | Protein +0,08 % | Daughters: - | Herds: - | Reliability: 79 %

PL Productive life +3,2 74 % Rel.
DPR Daughter pregnancy rate -0,1 74 % Rel.
SCS Somatic cell score 2,89 76 % Rel.
SCE Sire calving ease 6,8 % Diff. 80 % Rel.
DCE Daughter calving ease 4,3 % Diff. 58 % Rel.
SSB Sire stillbirth 8,9 % 68 % Rel.
DSB Daughter stillbirth 6,2 % 57 % Rel.

♂ Brekem RDC (♂ Bookem)

♀ Bosside Appl Demetra Red VG 85 (♂ Dakker RDC)
HL1 17208 3.88 668 3.09 531

♀ MS D Apple Danika Red EX 91 (♂ Destry RDC)
HL1 9180 4.31 396 3.55 326

♀ MS Delicious Apple-Red EX 94 (♂ Talent 2 RDC)



BRETAGNE

Proofs: 04/2018

		-1	0	+1	+2
PTAT	Type				+2,43
UDC	Udder Composite				+2,43
FLC	Feet & Legs Composite				+1,54
BSC	Body Composite				+0,34
Stature	Short				+2,02 Tall
Strength	Frail				+0,38 Strong
Body depth	Shallow				+0,30 Deep
Dairy form	Tight Ribbed				+1,27 Open Ribbed
Rump angle	High Pins				-0,62 Sloped
Thurl width	Narrow				+1,00 Wide
Rear leg (side view)	Posty				+0,60 Sickled
Rear leg (rear view)	Hock-in				+1,35 Straight
Foot angle	Low Angle				+1,67 Steep Angle
Feet & Legs Score	Low				+1,95 High
Fore udder attachment	Loose				+3,15 Strong
Rear udder height	Low				+3,25 High
Rear udder width	Narrow				+2,99 Wide
Udder cleft	Weak				+0,99 Strong
Udder depth	Deep				+3,15 Shallow
Front teat placement	Wide				+0,54 Close
Rear teat placement	Wide				-0,14 Close
Teat length	Short				+0,29 Long



Bosside Apple Demetra-Red (Dam)



German Genetics International GmbH

Caseine values with * are imputed values

5

GENETICS MADE IN GERMANY

For the correctness of the above-mentioned results GGI does not assume any liability.

GGI



Genetics Made in Germany

GEA

WestfaliaКазахстан

Сансызбай Умирбеков

Директор ТОО «Вестфалия Казахстан»
Казахстан
010000 Астана
Ул. Жансугурова 8/1, офис 504
Тел.: +7 7172 57 10 23
Моб.: +7 701 717 79 29
email: s.umirbekov@rambler.ru
сайт: www.geafarm.kz

Алмазбек Нуробаев

Менеджер по продажам, специалист по
генетике ТОО «Вестфалия Казахстан»
Казахстан
010000 Астана
Ул. Жансугурова 8/1, офис 504
Моб.: +7 777 419 17 19
email:almaz.nur@geafarm.kz
сайт: www.geafarm.kz



German Genetics International GmbH

Am Osterfeld 14
49661 Cloppenburg-Bethen
Germany

Tel.: +49 4471 - 9174 -0
Fax: +49 4471 - 9174 -74

E-Mail: info@ggi.de
Internet: www.ggi.de

